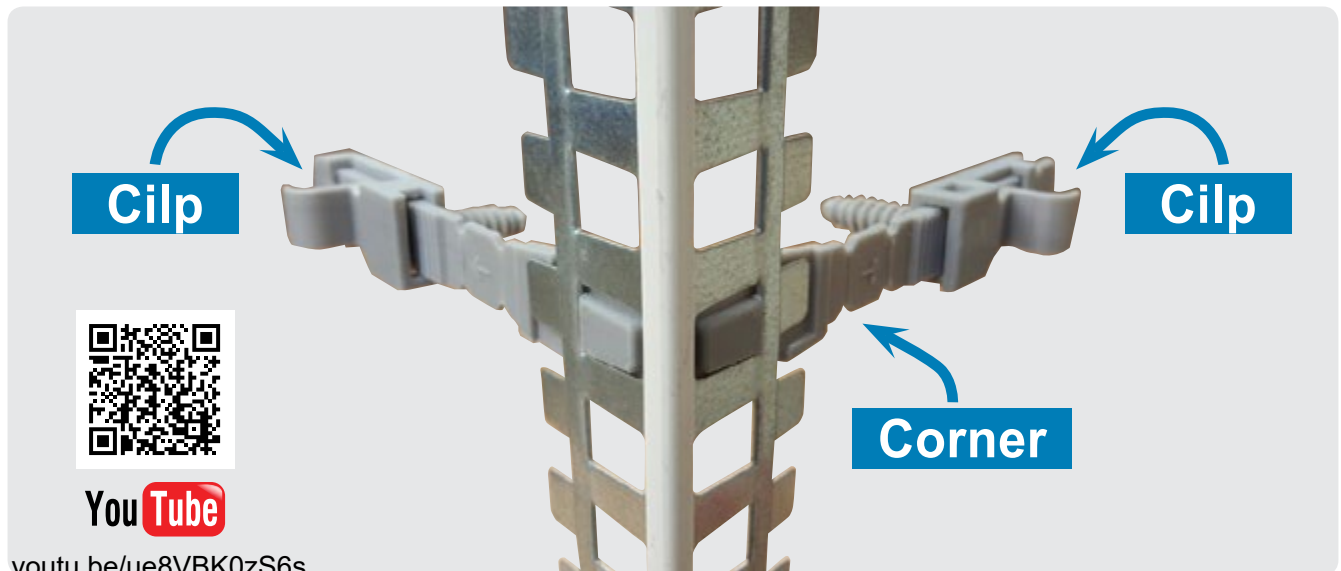


KLIPP

ADJUSTABLE CLIP FOR PLASTER CORNER

(Patent Pending)



Installation step-by-step



4 Hammer clip into the wall



3 Drill 9 mm holes



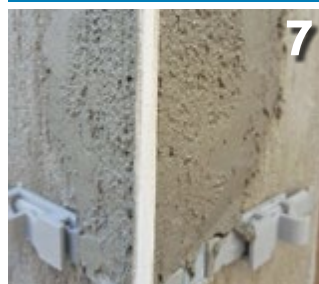
2 Mark drill holes



1 Connect the Clip with click



8 Remove the Clip



7 Apply plaster



6 Set corner



5 Level corner on both sides

- Easily assembled plastic clip for accurate installation of plaster corners.
- Connects to metal plaster corners with a click.
- Significant savings in time and labour.
- Maximal accuracy in placement of plastic corners, achieved by easy adjustment on both planes of the corner.
- Convenient and simple assembly, requiring only a hammer drill, a marker and a level.
- It is recommended to use 3 units per 3 meter corner length.